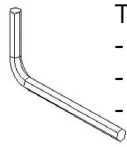


Assembly Instructions - Tablet Docking Station

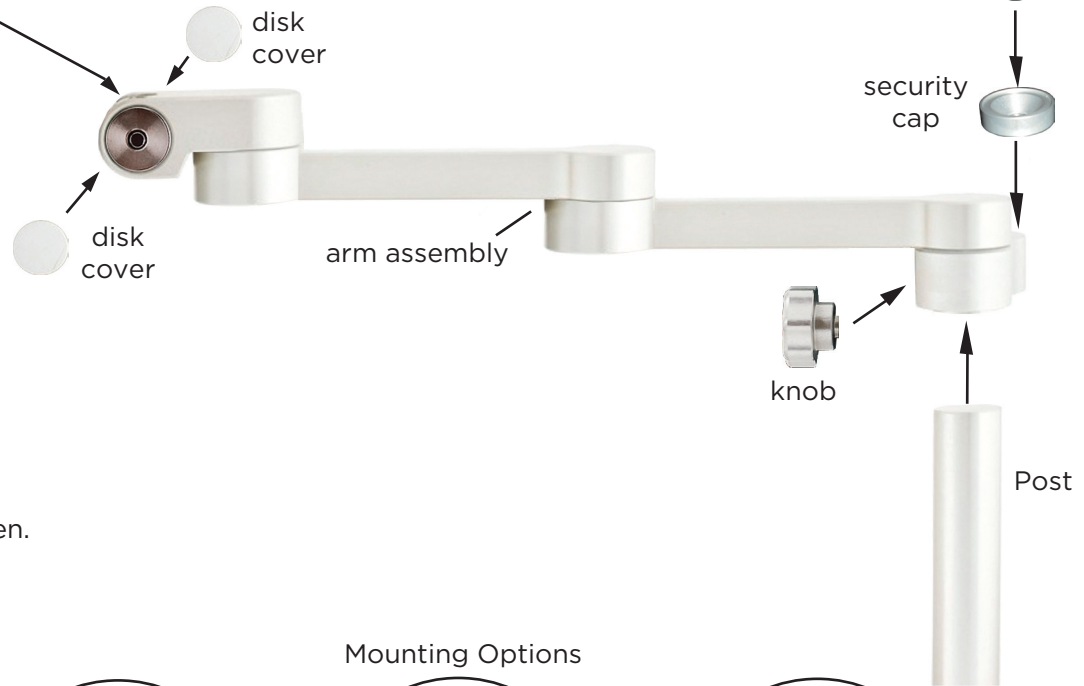


Tablet Holder



Tools Required:

- 5 mm Hex Key (supplied)
- 8 mm Hex Key (supplied)
- Torx Driver (supplied)
- 19 mm wrench (through desk)
(customer supplied)



Instructions:

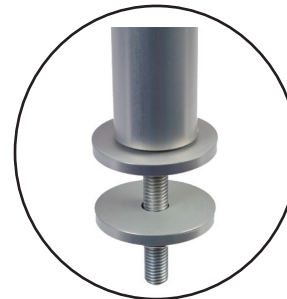
1. Attach post to mounting solution.
Use either the edge clamp, wall mount or the through desk mount to attach post to mounting solution.
2. Attach clamp to surface.
3. Slide arm assembly over post & tighten knob.
4. Sit security cap on arm and insert screw. Tighten.
5. Insert the Tablet holder into the Head.
6. Insert the iPad into the Holder.
7. Attach cover disks with adhesive attached.

Depending on the security required, choose between the supplied thumb screws (for easy removal) or the Torx driver and security screws (please do not over-tighten).

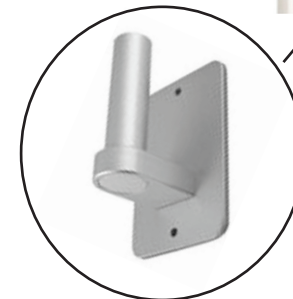
Mounting Options



small edge clamp



through desk (19 mm wrench)



wall mount