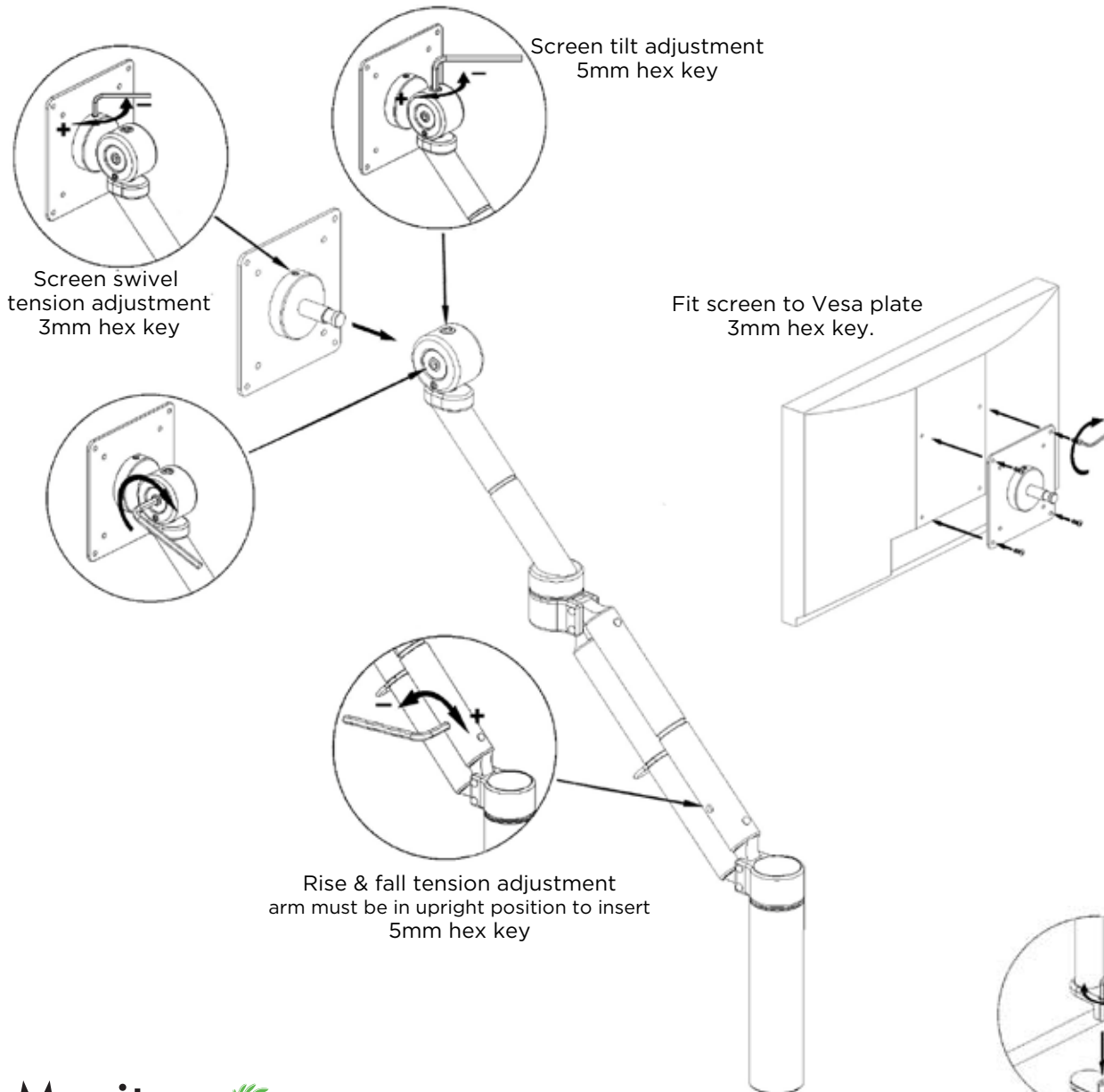


Assembly Instructions - Mantis 2



Instructions:

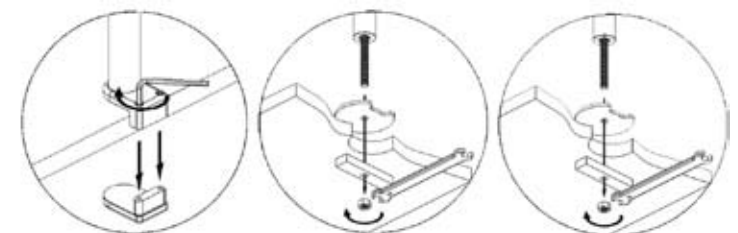
1. Use the edge clamp, through desk mount or the Vice clamp to attach the arm to the surface.
2. Attach screen to VESA plate mounting using a 3mm hex key.
3. Insert Vesa plate to arm.
4. Adjust screen tilt, screen swivel and rise & fall tension.
(Please do not over-tighten)

Tools Required:

- 8mm Hex key (supplied)
- 5mm Hex key (supplied)
- 3mm Hex key (supplied)

- 19 mm wrench
(through desk/cable grommet)
(customer supplied)

Post fitting options



Vice clamp
5mm Hex key

Cable grommet
19mm Wrench

Through desk
19mm Wrench