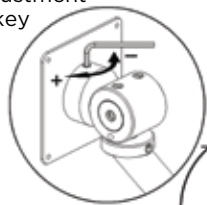


Assembly Instructions - Mantis 25

Note - The counter balance of the arm will not allow the arm to move until the monitor is attached.

Screen swivel tension adjustment
4mm Hex key



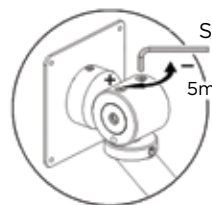
Imac head



Vesa plate

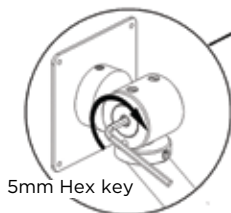


Screen tilt tension adjustment

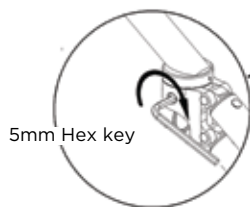


5mm Hex key

Fit screen to VESA screen mount using a 3mm Hex key before attaching to arm

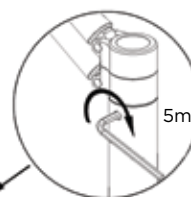


5mm Hex key



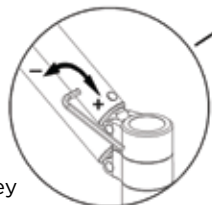
5mm Hex key

Gas Cylinder



5mm Hex key

Rise and fall tension on Gas Cylinder adjustment arm must be in upright position to insert 5mm Hex key



Post

Instructions:

1. Attach post to mounting option.
2. Use the edge clamp, through desk, cable grommet or wall mount to attach the post to the surface.
3. Insert the gas cylinder into post and tighten using a 5mm hex key.
4. Insert second extension into place and tighten using a 5mm hex key.
5. Attach screen to mached adapter or VESA plate using a 3mm hex key.
6. Insert Vesa plate or mached adapter to arm.
7. Adjust screen tilt, screen swivel and rise & fall tension. (Please do not over-tighten)

Tools Required:

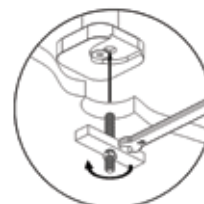
- 8mm Hex key (supplied)
- 5mm Hex key (supplied)
- 4mm Hex key (supplied)
- 3mm Hex key (supplied)
- 19 mm wrench (customer supplied)



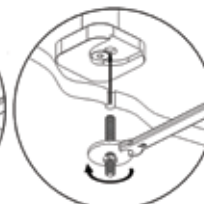
Desk Clamp



Wall Mount



Cable grommet
19mm Wrench



Through desk
19mm Wrench

Post fitting options

Monitors 
in Motion