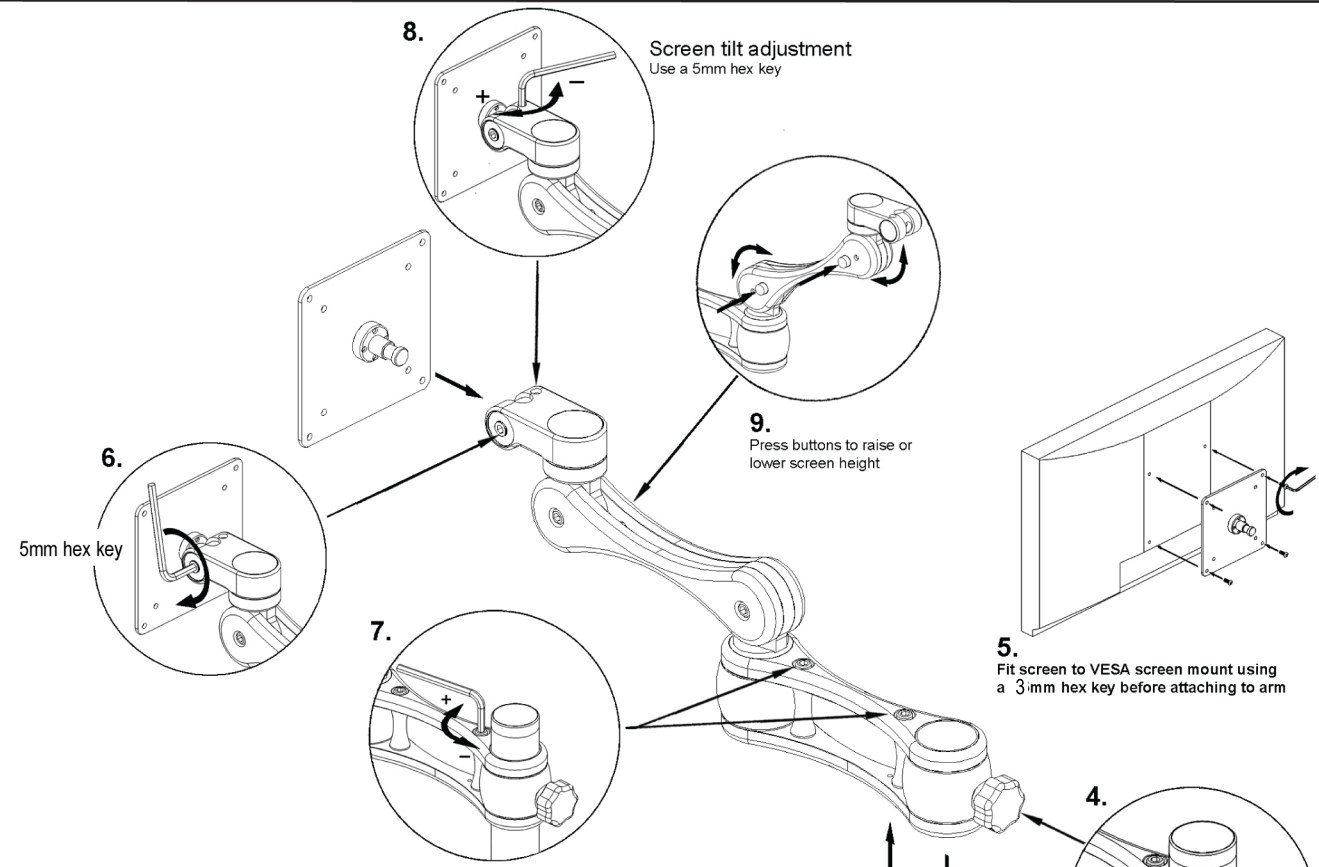
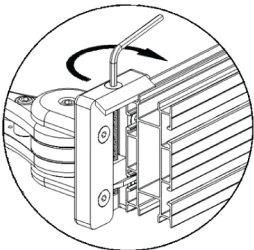


# Assembly Instructions - The Cobra

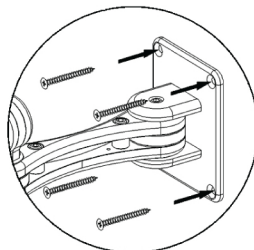


## Tools Required

- 1 x 5mm hex key
- 1 x 4mm hex key (Slatwall clamp only)
- 1 x 3mm hex key
- 1 x 19mm Wrench (Through desk & Cable grommet only)

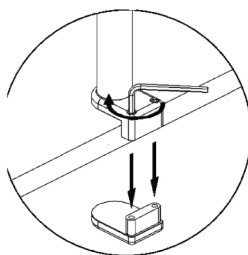


**1.**  
Slatwall clamp  
Fit to slatwall and tighten using a 4mm hex key

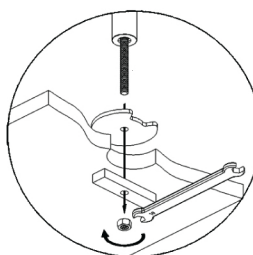


**2.**  
Wallmount  
Fit bracket to wall using suitable fixings before attaching screen

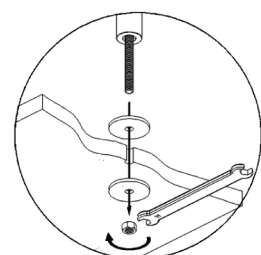
## 3. Post fitting options



Vice Clamp  
5mm Hex keys  
+8mm hex key & 12mm bolt



Cable grommet  
19mm Wrench



Through desk  
19mm Wrench